



GOLDEN EAGLE LUXURY TRAINS

VOYAGES OF A LIFETIME BY PRIVATE TRAIN™

# Grand Alpine Express

2026 DEPARTURES





## Golden Eagle Danube Express

The Golden Eagle Danube Express is your  
luxurious hotel-on-wheels.



The Golden Eagle  
Danube Express  
offers a truly  
luxurious journey



Unpack just the once and settle into your well-appointed  
and comfortable en-suite cabin as you begin this voyage  
of a lifetime.

One of your cabin attendants, available throughout the day  
and evening, will be on hand to look after all of your needs.

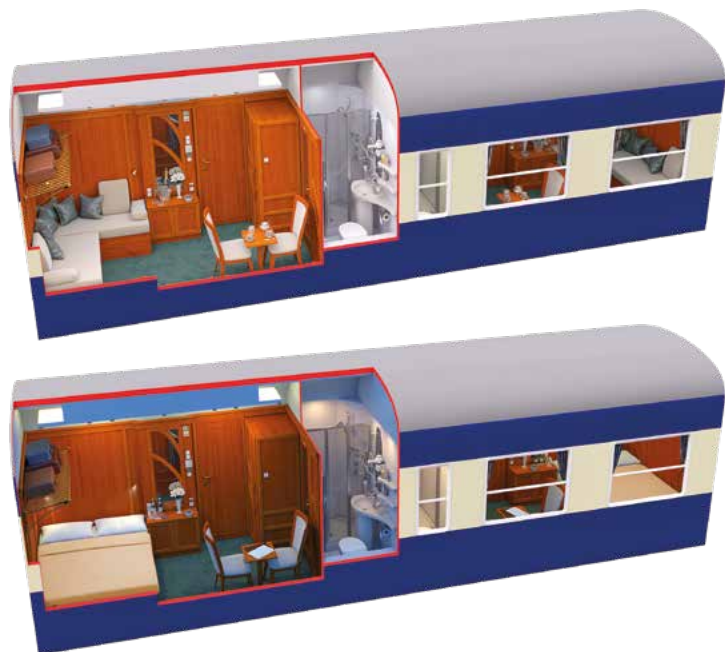




# Superior Deluxe

Our Superior Deluxe cabins, with private en-suite facilities, offer the ultimate in European rail accommodation in terms of space, facilities and comfort.

With 12 cabins per departure, each cabin offers comfortable daytime seating with a full length sofa and two additional chairs. The large cabin also benefits from two full-size picture windows, one of which is openable to add to the bright and airy feel of the interior. Each evening the cabin is transformed into a luxurious bedroom with a King Size bed. All cabins have, as standard, a large double wardrobe with excellent storage space, individually controlled air-conditioning, lighting with dimmer switches, individual reading lights, in cabin Wi-Fi and USB ports, power sockets and a safe. Depending on the number of guests onboard, one or two of our restaurant cars will be on every departure.



## Superior Deluxe Dimensions

Cabin Area	93 sq ft (8.6 sq m)
Cabin Length	14ft 9ins (4.5m)
Cabin Width	6ft 2ins (1.9m)
Lower Bed Width	5ft 0ins (1.5m)
Bed Length	6ft 2ins (1.9m)
Cabins Per Car	4

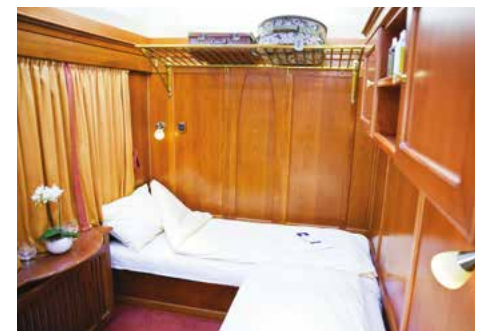
## Superior Deluxe Specification

- King size bed
- Private en-suite bathroom with cubicle shower and WC
- Additional daytime seating with table
- Two large picture windows - one opens partially, perfect for photograph opportunities
- Individually controlled air-conditioning and heating
- Adjustable lighting
- Double wardrobe and personal safe
- Wi-Fi and two USB ports

# Deluxe

Travel in some of the finest rail accommodation available in Europe.

Each Deluxe sleeper carriage has just five spacious yet intimate en-suite cabins offering every convenience and comfort so you may sit back, relax and enjoy the scenery as it rolls by. Private bathrooms feature a shower with constant hot water, washbasin and toilet. There is a heated towel rail, shaver socket and hairdryer. A range of toiletries and a dressing gown are provided. Cabins have individually controlled air-conditioning, lighting with dimmer switches, individual reading lights, power sockets and a safe. Co-ordinated fabrics complement wood-panelled walls and brass fittings. Two comfortable armchairs provide daytime seating and a free-standing chair adds flexibility. Cupboards and a full length wardrobe provide ample storage whilst the large picture window and full length mirror enhance the spacious feel. A second window will open for fresh air and for that perfect photo opportunity. During dinner each evening the living room is converted into two comfortable lower beds by your attendant who is also on hand to bring you early morning tea or coffee.



## Deluxe Dimensions

Cabin Area	83 sq ft (7.7 sq m)
Cabin Length	13ft 0ins (2.6m)
Cabin Width	6ft 4ins (1.95m)
Bed Width	2ft 7ins (0.8m)
Bed Length	6ft 1ins (1.85m)
Cabins Per Car	5 x two bed cabins per carriage



## Deluxe Specification

- Two lower berth single beds
- Private en-suite bathroom with cubicle shower and WC
- Two armchairs and free-standing chair for daytime seating
- Large picture window - opens partially, perfect for photograph opportunities
- Individually controlled air-conditioning and heating
- Full length wardrobe and power sockets
- Wi-Fi available





## Dining On Board

A world of culinary delights.

The Golden Eagle Danube Express Restaurant Cars are a delightful venue in which to enjoy meals skillfully prepared by our Executive Chef and his on board restaurant team using the very best in ingredients, locally sourced wherever possible. Depending on the number of guests on board, one or two of our Restaurant Cars will be on every departure.

Enjoy the delights of an on-train breakfast each morning - a wide selection of fruit, cereals, freshly baked pastries, orange juice and cold plates are available from our bountiful buffet. Alternatively, enjoy a cooked breakfast brought to your table by our waiting staff, all complemented by steaming hot tea and coffee.

For lunch and dinner, you will enjoy fine food, great wines and attentive service in the welcoming atmosphere of the Restaurant Car.

We offer a culinary experience that reflects the very essence of the countries we travel through, as well as international cuisine. Vegetarian and other dietary options are also available.

All our meals at lunch and dinner are complemented by an excellent choice of wines from around the world, personally selected by our Company Founder, Tim Littler, along with bottled water, beer and soft drinks. For that special occasion we also have available to purchase a selection of premium fine wines priced between \$50 and \$795 per bottle.

Meals on board are a relaxed affair as the Restaurant Cars can accommodate all our guests in a single sitting. Throughout the journey there is an informal dress code, so you can enjoy our culinary experiences in convivial and relaxed surroundings and with our open-seating policy you can dine wherever, and with whomever, you please.





# Relax In Our Bar Lounge Car

## The Social Heart of the Golden Eagle Danube Express: The Bar Lounge Car

Indulge in the ultimate luxury and comfort in the Bar Lounge Car, the social heart of the Golden Eagle Danube Express. This elegant haven is the perfect place to relax and embrace the leisurely pace of life on board.

Unwind in sumptuous surroundings as you watch the picturesque landscapes unfold outside your window. Engage in delightful conversations with fellow travellers, fostering new and lasting friendships. Whether you prefer to immerse yourself in a captivating novel or enjoy a friendly game of cards, the Bar Lounge Car offers an inviting ambiance for all. Throughout your journey, you will receive printed daily itineraries detailing train arrival and departure times, the latest weather forecasts for upcoming destinations, and comprehensive information on the next day's excursions.

As evening descends, let the soothing melodies of our resident pianist fill the



air, enhancing the sophisticated atmosphere. The bar remains open until the last guest retires, ensuring that your evenings are filled with camaraderie and elegance.

Experience the perfect blend of relaxation, luxury, and adventure in the Bar Lounge Car of the Golden Eagle Danube Express, where every moment is designed to be unforgettable.





# Grand Alpine Express

HUNGARY • AUSTRIA • SWITZERLAND • ITALY • SLOVENIA



Dramatic mountain scenery, alpine meadows and beautiful lakes provide the continual backdrop for this magnificent tour by rail.

Soak up inspiring lakes and mountains scenery as we travel by private train through the stunning Alpine region of Central Europe.

From the classic capital cities of Budapest and Vienna, we venture deep into the Austrian Tyrol before heading into the valleys of the Swiss Alps and onwards through the Italian Lake District as we visit Como before heading into the lesser-known but equally beautiful country of Slovenia and its jewel, lake Bled.

Traverse some of the most scenic railway lines in the world as the Golden Eagle Danube Express weaves its way

through tunnels, across viaducts and over mountain passes. Journeys end will be in the stunning maritime city of Venice, an outstanding mix of Gothic and Renaissance palaces perched on the edge of the Italian coast.

A perfect end to a memorable journey of alpine discovery.



## Tour Includes

- 2 hotel nights in Budapest
- 6 nights onboard Golden Eagle Danube Express
- 2 hotel nights in Venice

## Tour Dates

May 1 – May 11, 2026

June 5 - June 16, 2026

## Day by Day Schedule

DAY 1	Budapest	DAY 7	Verona and Trieste
DAY 2	Budapest	DAY 8	Lake Bled & Ljubljana
DAY 3	Vienna & Semmering Pass	DAY 9	Postojna & Venice
DAY 4	Lake Achen & Innsbruck	DAY 10	Venice
DAY 5	Zürich	DAY 11	Venice
DAY 6	Lake Como		



## 1 Budapest Hungary

On arrivals day in Budapest, you will be met at the airport, train station or river ship landing stage and transferred to the Four Seasons Hotel Gresham Palace for a two-night stay.

Enjoy a welcome reception dinner in the elegant surrounds of this art nouveau landmark, with its panoramic views across the River Danube, where you can meet your fellow travellers on this highly-anticipated journey.



## 2 Budapest Hungary

Budapest is an alliance of two cities separated by the River Danube. The old city of Buda and the imposing Royal Palace, dominates the city with stunning views across the Danube to the commercial heart of Pest. Our panoramic city tour includes the Castle District, St. Mathias Church and Fishermen's Bastion. We will also see the Parliament, Opera House, St Stephen's Cathedral, Heroes Square and the City Park.

The rest of the day is at leisure where you can stroll along the banks of the Danube or head to one of the city's famous thermal baths for a rejuvenating dip. Alternatively, you can relax at the hotel and indulge in the hotel's luxurious spa with infinity-edge pool or make use of the state-of-the-art fitness centre.



## 3 Vienna Austria

We enjoy a drinks reception at Budapest Nyugati station before boarding the Golden Eagle Danube Express for our morning departure. Settle in to your cabin and later enjoy lunch as the train heads to Vienna.

The stunning capital city of Austria enthral visitors with its rich heritage. A seductive metropolis of elaborate palaces, renowned coffee houses, classical music and enchanting opera. Today's programme will include a horse-drawn carriage ride through the cobbled streets of the Old Town, the famous Schönbrunn Palace, or free time to explore yourself.

This evening, we will enjoy a private concert featuring the Vienna Supreme Orchestra.

## 4 Semmering Pass, Lake Achen & Innsbruck Austria

Today will be one of the real highlights of the journey as we depart from Vienna in the morning and travel across central Austria and into the Alps on an incredibly scenic morning.

Cameras at the ready as we climb over the Semmering Pass with its 16 viaducts and 15 tunnels, through the famous skiing village of Kitzbuhel to Jenbach, where after lunch we take a scenic drive to the picturesque Lake Achen (Achensee) for a cruise on the water.

From here we will travel by bus the short distance to Innsbruck, capital of Austria's western state of Tyrol, a city in the Alps that's long been a destination for winter sports. Innsbruck is also known for its Imperial and modern architecture.







## 5 **Zürich** Switzerland

Another fantastic morning on board the Golden Eagle Danube Express to simply sit back, relax and watch the scenery of the Vorarlberg unfold in front of your eyes as we pass through St. Anton before crossing through Liechtenstein and then into Switzerland where we run

along the whole of the Lake of Zürich before arriving in the city itself.

The city of Zürich, a global centre for banking and finance, lies at the north end of Lake Zürich in northern Switzerland. The picturesque lanes of the central

Altstadt (Old Town), on either side of the Limmat River, reflect its pre-medieval history. Waterfront promenades like the Limmatquai follow the river toward the 17th-century Rathaus (Town Hall). Whilst in the city we will enjoy a traditional Swiss fondue tasting.

## 6 **St Gotthard Pass & Lake Como** Switzerland & Italy

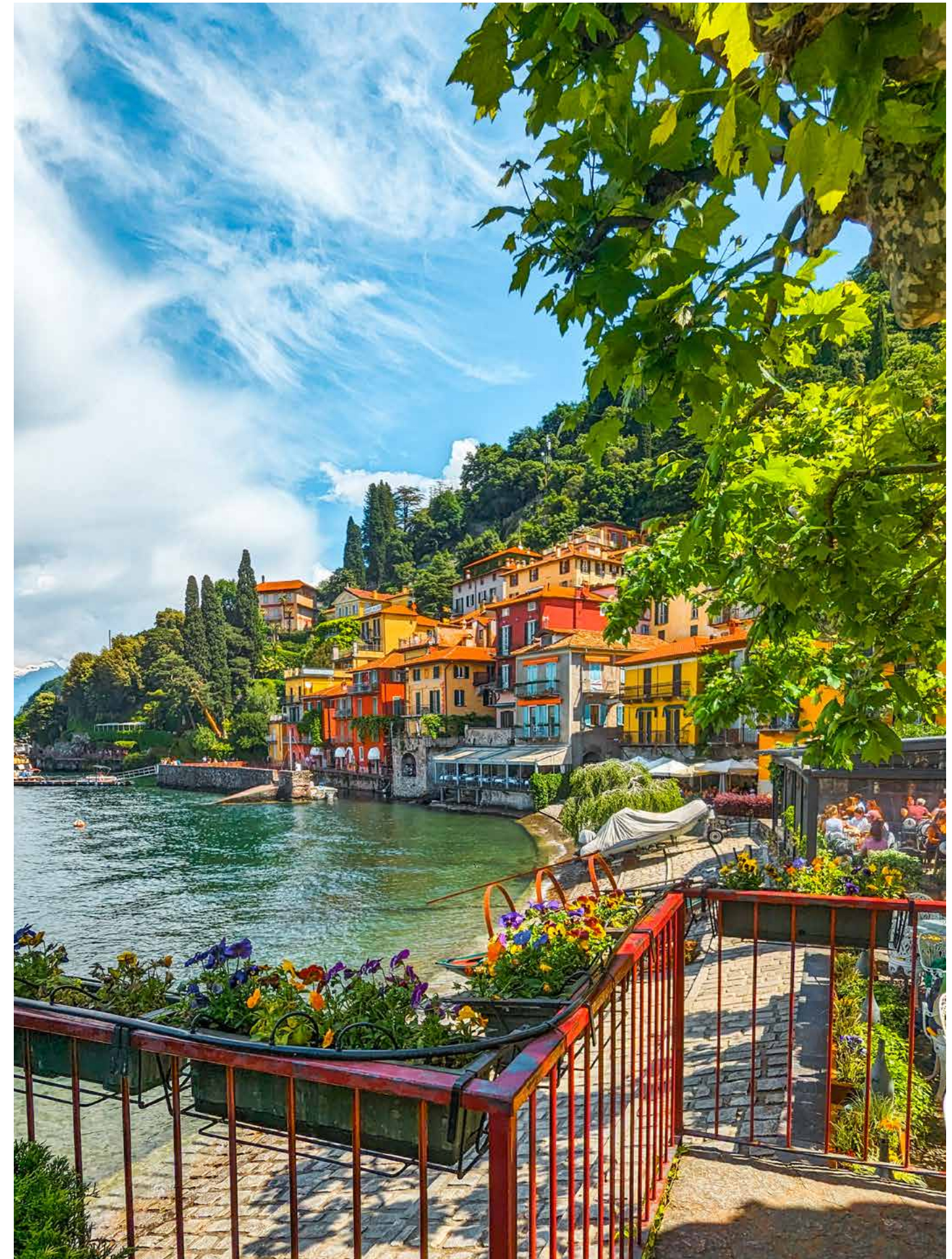
Today is one for the cameras! Upon leaving Zürich we pass along the shorelines of Lakes Zug and Lucerne before starting the very scenic climb to the St Gotthard Pass.

Once through the old St Gotthard tunnel we descend through Lugano towards Lake Como in Italy.

We enjoy a private boat cruise across the serene water and visit the beautiful lakeside town of Bellagio, where

we stop for a scenic lunch and an opportunity for souvenir shopping.

Lake Como is surrounded by high mountains and dramatic cliffs, so it is quite different from the other Italian lakes. A narrow road runs up its western coast towards Switzerland and sits up high above the water, with the towns dropping down beneath it. Renowned for its beautifully kept public gardens and historic villas, it is easy to see why so many celebrities love Lake Como.







## 7 Lake Bled & Ljubljana Slovenia

This morning be awake early as our train climbs away from Trieste and heads over the border into Slovenia and continue climbing through the Julian Alps to Lake Bled which, with its island, church and castle is an incredibly picturesque alpine lake situated at the foothills of the Alps in north-western Slovenia.

From here we travel onto Ljubljana as we have lunch on board and discover a delightful combination of ancient architecture and a youthful culture. Our afternoon tour includes visits to Preseren Square, Three Bridges and Dragon Bridge.



## 8 Verona & Trieste Italy

This morning after running along the south shore of Lake Garda we arrive in Verona. Famous for being the setting of Shakespeare's 'Romeo and Juliet', we enjoy an informative walking tour of Verona's famous sites, including the first century Roman Amphitheatre in Piazza Bra.

We lunch on board and later in the afternoon we arrive into Trieste, the Italian port for a short tour. We stop at the imposing Miramare Castle and visit the vast Piazza Unita d'Italia, the main town square. Alternatively, visit the famous 13th century Church of San Giusto, built around a medieval complex overlooking Trieste. We can go inside the church for a close-up view of the splendid Byzantine-style architecture enriched with precious mosaics.



## 9 Postojna & Venice Slovenia & Italy

As the train stays overnight in Postojna, we include a private visit to Postojna Caves in the morning. We then head south towards Mestre where our train curves to the left onto the 3-mile causeway across the Venice Lagoon and into Venice Santa Lucia station located on the Grand Canal, arriving after lunch.

We say farewell to our train crew and transfer to the San Clemente Palace Kempinski for a two-night stay, a five-star luxury urban resort on a private island, just minutes from Piazza San Marco via regular complimentary boat. Offering impressive views of Venice Lagoon, the 900-year-old property features a 12th century chapel and expansive stately gardens and courtyards.

## 10 Venice Italy

Venice is a truly captivating and romantic city; its unrivalled beauty takes away the breath of first-time visitors and regulars alike. Today, enjoy a walking tour around the highlights of this spectacular city. Walk through the winding lanes beside the Grand Canal to St. Mark's Square, which for 1,000 years was the heart of Venetian life. We also see St. Mark's Basilica and can choose to stroll through the Rialto Market. A trip to Venice would not be complete without a gondola ride along Venice's famous canals (we include a 30-minute gondola in the programme).

Alternatively enjoy the city at your own pace today. Perhaps stroll through the artists' district of Dorsoduro, stopping

to take in the city's most breath-taking views from the Accademia Bridge. In the evening, we will enjoy a farewell reception dinner, giving you the opportunity to reflect on your journey through this beautifully scenic part of Europe.

## 11 Venice Italy

On the final morning following breakfast in the hotel, you will be transferred to the airport for onward departures. There is also an option to extend your stay in Venice for additional nights to explore more of this fascinating city.





## What's Included in the Tour Price

As far as possible our tours are all-inclusive with no hidden extras. What follows are all those elements which are included in the tour price.

The only extra items you may need to budget for include personal expenses such as International and Internal flights that are not included in the itineraries, visa costs, insurance and laundry.

### EXPERIENCED TOUR MANAGERS

Our experienced Tour Managers are selected for their travel knowledge, and their linguistic and organisational abilities allowing you to relax and enjoy your rail cruise. We receive exceptional passenger comments about our Tour Managers and their aim is to ensure you enjoy every minute of your holiday.

### ARRIVAL & DEPARTURE AIRPORT TRANSFERS

Arrival and departure transfers are included.

### HOTEL AND ON BOARD ACCOMMODATION

Although you will spend much of your time sightseeing or relaxing in the train's public areas, you will find your cabin a welcome retreat at the end of a rewarding day. All hotels are of five-star standard, or the best available.

### DRINKS WITH MEALS

A generous drinks allowance, both alcoholic and non-alcoholic, is included with lunch and dinner on and off the train.

### BREAKFAST, LUNCH AND DINNER DAILY

All meals are included, starting with dinner on the first day and ending with breakfast on the last day. All departures feature one or two uniquely designed Restaurant Cars where you

can enjoy the excellent waiter-served food and wine. Several times during the tour we will also sample authentic local cuisine with wine and a selection of drinks off the train, which is also included in the tour price.

### ON BOARD SERVICE

You can expect service which is attentive, friendly and unintrusive. Your car attendants provide 24-hour housekeeping and bedding turndown services, with one attendant always on duty to assist you and to ensure you are comfortable in your cabin. Complimentary tea, coffee and bottled drinking water are available in your cabin 24 hours a day.

### GUIDED OFF-TRAIN EXCURSIONS

The history and culture of the places we visit on our rail cruises will come alive through our expert local guides. All our tours include a wide-ranging sightseeing schedule to make the most of the time you have off the train and bring you closer to the culture, people and history of your destinations. We believe it is the special little touches that help create magical memories.

### PERSONAL HEADSETS

On all the off-train excursions, to enhance your enjoyment and insights into the places you visit, you will be provided with a lightweight personal headset on which to listen to your tour guide as you take in the sights. The range of the headset

means that you do not need to worry about missing any of the guide's commentary on your excursion, even if you prefer to wander away from the group.

### ON BOARD DOCTOR AND MEDICAL FACILITIES

To give you peace of mind our tours are accompanied by a doctor who travels with us for the entire journey; so you can rest assured that medical assistance is always available. On call 24 hours a day, the doctor is on hand to give primary care as required. In almost every case, the doctor will be English-speaking and registered with the General Medical Council in the UK.

### LUGGAGE HANDLING

As you only have to unpack once your luggage and belongings will stay with you on the train throughout the journey but, wherever necessary, portage is included between the hotels and stations.

### ALL GRATUITIES

You will not have to worry about tipping on or off the train on your rail journey with Golden Eagle Luxury Trains as all gratuities are included in the tour price.





## GOLDEN EAGLE LUXURY TRAINS LIMITED

Denzell House, Denzell Gardens, Dunham Road, Altrincham, Cheshire, WA14 4QF, United Kingdom

To Book, Call Luxury Trains

**Tel:** +44 (0)333 405 0192 **Email:** [enquiries@luxury-trains.co.uk](mailto:enquiries@luxury-trains.co.uk)